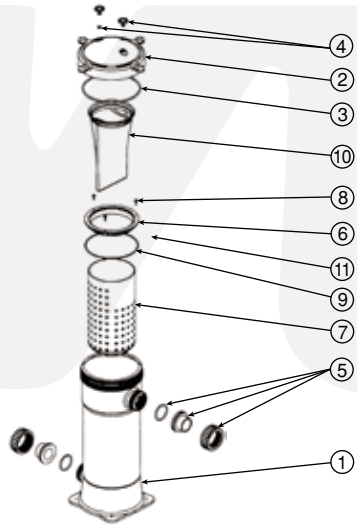


TBF SPARE PART LISTS



Drawing no.	Product Code	Product Description
1	62044130	T/LINE BAG FILTER C50 TANK
	62044180	T/LINE BAG FILTER C75 TANK
2	6204417	T/LINE BAG HOUSING LID
3	620262	O'RING G220
4	620221	AIR RELEASE VALVE -BLACK or GREY
5	122257BLK	H/UNION TRIMLINE 50/40mm BLACK c/w O'RING (2 req'd)
	6340247B	H/UNION 63x35mm METRIC EU BLACK c/w O'RING (2 req'd)
	6340241	O'RING BS332 H/UNION 50mm
6	3651947	CAGE RING
7	3651946	SUPPORT CAGE FILTER BAG C50
	36519460	T/LINE BAG FILTER C75 SUPPORT CAGE
8	663379	#12x3/4" PT SCREW SS (3 req'd)
9	620263	O'RING BS266
10	Refer to Waterco pricelist	Filter Bag
11	63814277	SCREW M3x6 S/S 316 (4 req'd)

SYMPTOM	POSSIBLE CAUSE/S	POSSIBLE SOLUTION/S
Water is not clear	Insufficient disinfectant level	Increase disinfectant level
	Incorrect flow	Check pump selection
	Insufficient running times	Increase pump running time
	Filter is dirty	Replace filter bag
	Worn o-ring seal inside filter	Replace o-ring
	Hole in filter bag	Replace filter bag
Low water flow	Air leaks on suction side	Tighten connections, check o-ring seals, check pipework for cracks/ holes
	Restriction or blockages in either suction or return lines	Remove any blockages
	Filter bag dirty or blocked	Filter bag needs to be replaced
	Pump not primed	Consult pump's troubleshooting
	Pump impeller vanes blocked	Consult pump's troubleshooting
	Pump operating under speed (low voltage)	Consult pump's troubleshooting
Short filter cycles	Pump output exceeds designed flow rate of filter	Check pump selection
	Ineffective cleaning of the bag	Replace filter bag
High pressure on start-up	Partially closed valve on return line	Open valve fully
	The pump is too large	Check pump selection

WARRANTY

This unit is covered by a 5 year warranty (2 full + 3 pro-rata) against faulty materials and workmanship. Commercial applications attract a 2 year conditional warranty. Please refer to the detailed warranty booklet provided.

TRIMLINE BAG FILTERS

Installation and Operating Manual



⚠ WARNING

This equipment must be installed and serviced by a qualified technician. Improper installation can create electrical hazards which could result in property damage, serious injury or death. Improper installation will void the warranty.



Notice to Installer

This manual contains important information about the installation, operation and safe use of this product. Once the product has been installed this manual must be given to the owner/ operator of this equipment.

OFFICES - AUSTRALIA

NSW - Sydney
(HEAD OFFICE)
Tel : +61 2 9898 8686

SA/ NT - Adelaide
Tel : +61 8 8244 6000

VIC/ TAS - Melbourne
Tel : +61 3 9764 1211

WA - Perth
Tel : +61 8 9273 1900

QLD - Brisbane
Tel : +61 7 3299 9900

ACT Distributor
Tel : +61 2 6280 6476

OFFICES - OVERSEAS

Waterco (USA) Inc
Phoenix, Arizona, USA
Tel : +1 623 434 4703

Waterco USA
Augusta, USA
Tel : +1 706 793 7291

Waterco Canada
Quebec, Canada
Tel : +1 450 796 1421

Waterco (Europe) Limited
Radfield, Kent, UK
Tel : +44(0) 1795 521 733

Waterco (NZ) Limited
Auckland, New Zealand
Tel : +64 9 525 7570

Waterco (GZ) Limited
Guangzhou, China
Tel : +8620 3222 2180

Waterco (Far East) Sdn. Bhd.
Kuala Lumpur
Tel : +60 3 6145 6000

PT Waterco Indonesia
Jakarta, Indonesia
Tel : +62 21 4585 1481

WATERCO

Waterco Limited ABN 62 002 070 733

Member
WATER
QUALITY
ASSOCIATION



WATERCO

Water, the Liquid of Life

www.waterco.com

DESCRIPTION

The Trimline Bag Filter (TBF) series has been designed for residential, commercial and light industrial applications. Made from high quality materials, the TBF series provides both compact and economical filtration.

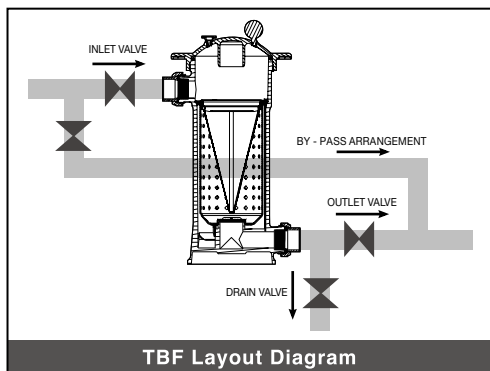
Liquid enters the housing through the top port and flows through the bag from the interior to the exterior. Particulates are retained on the inner surface of the bag and clean liquid exits the housing at the base.

NOTE : Your Trimline Bag Filter is designed to remove dirt, debris and suspended solids from the water – it is not designed to sanitise the water.

INSTALLATION

Positioning

- The filter unit should sit on a level concrete surface or a precast concrete slab of suitable strength.
- The filter unit should be located near a drain, to minimise the amount of piping needed for waste removal.
- Position the filter away from direct sunlight.
- Be sure to comply with local plumbing regulations, particularly those regarding waste disposal.
- Ensure that there is an adequate air gap between the waste pipe outlet and the drain into which it discharges. If this is not the case, some of the drain waste may be drawn back into the water filter.
- If the incoming water pressure is higher than the maximum pressure rating, a pressure regulating valve (PRV) needs to be incorporated upstream of the filter inlet. The PRV should be at least 20mm (3/4") in diameter.



Plumbing

- To minimise pressure loss through the filter, all incoming pipework should be 40mm (1 1/2" diameter) PVC Class 12 piping.
- To ensure the highest efficiency, construct the piping system with the smallest amount of joints and elbows. This minimises the build-up of pressure (or head) in the system.
- A by-pass piping arrangement should be incorporated that allows the filter unit to be isolated for servicing and maintenance, while still ensuring continuous water supply through the system.
- Filter connections are provided with O-ring seals. To avoid damage to the O-rings, only use a silicone-based lubricant.
- Ensure that all pipe connections are tight and free of leaks.

MAINTENANCE

When to change the filter bag

As filtration proceeds, the pores in the filter become clogged with debris from the pool water. When this occurs the pressure inside the vessel will rise and the flow of water will begin to decrease. This will continue until it is necessary to replace the filter bag.

Bag replacement is determined by the following conditions:

- The internal pressure of the filter increases by 50kPa.
- The flow rate decreases until it is insufficient to meet demand.
- The efficiency of the filter medium decreases until the filtered water is no longer of an acceptable quality.

Changing the Filter Bag

- Turn off the system's pump. However, if a by-pass valve is installed, the pump is not required to be switched off.
- Close the filter's inlet and outlet valve (not supplied with unit). If installed, open the by-pass valve.
- Open the air relief valve on the lid to release all pressure from within the tank.
- Open the drain valve to empty the water in the filter. Close the valve once the filter has been adequately drained.
- Remove the lid manually by hand-turning counter clockwise.
- Remove the filter bag and insert a new bag.
- Check the lid's O-ring for cracks or tears. Replace if necessary.
- Replace the lid onto the filter. **Hand tighten only.**
- Start the pump and slowly open the inlet valve. Close the inlet valve when water flows from the air relief valve on the lid. If a by-pass valve is fitted, close the by-pass valve and slowly open the inlet valve. Close the inlet valve when water flows from the relief valve.
- Close the air relief valve.
- Open the outlet valve.

FILTER SPECIFICATIONS

	C50	C75
Max Flow Rate, Residential (lpm, gpm)	55.4 / 14.8	88.0 / 23.2
Max Flow Rate, Commercial (lpm, gpm)	20.7 / 5.5	32.9 / 8.7
Required clearance for serving (mm, inch)	530 / 20.9	770 / 30.3
BAG DETAILS		
Surface Area (m ² , ft ²)	0.17 / 1.85	0.27 / 2.9
Volume (litres)	7.9	17.3
Diameter (mm)	178	178
Length (mm)	419	660
Material	Polyester*	Polyester*
Specific Gravity	0.91	0.91
Tensile Strength (MPa)	50 - 85	50 - 85
Abrasion & Flex	Very Good	Very Good
Weak Acids	Excellent	Excellent
Strong Acids	Excellent	Excellent
Weak Alkali	Excellent	Excellent
Strong Alkali	Excellent	Excellent
Solvents	Fair	Fair

* 800 micron bag is nylon.

HOUSING SPECIFICATIONS

Max. Pressure	600kPa (87psi)
Max. Temperature	40°C (104°F)
Material	Polypropylene
Seals	Buna-n

HEAD LOSS CURVE TBF C75

